



# Technical Specifications

## QuietPro

SOUND SHIELD

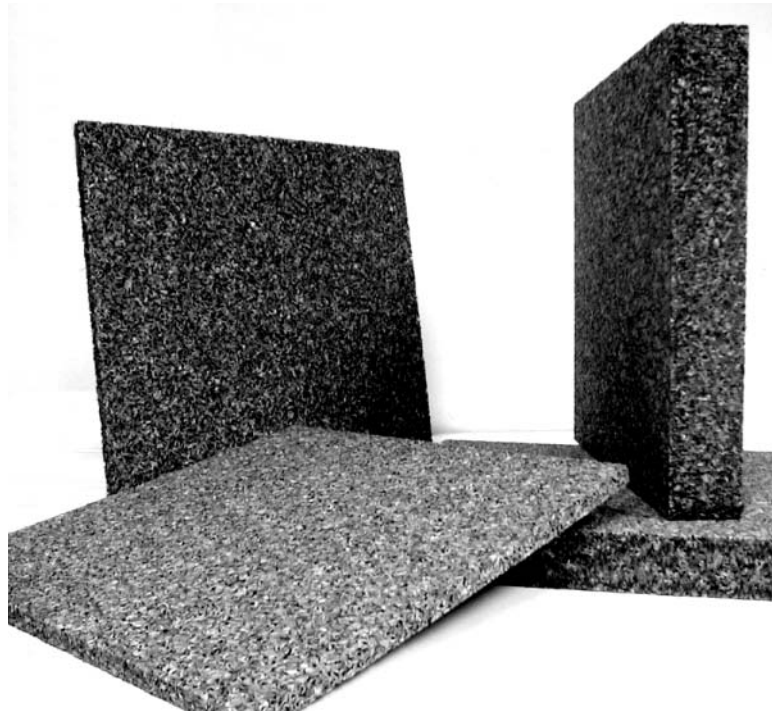
DUAL-LIFT (0.086m)

ENGINE

SERVICE CHANNEL

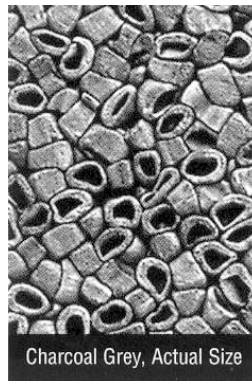
## QuietPro

### Water Resistant Sound and Vibration Absorbing Panel



### QuietPro

This innovative, water resistant, sound and vibration absorbing product is made of expanded polypropylene pellets formed into rigid boards.



Charcoal Grey, Actual Size

QuietPro is a light weight, water resistant, sound and energy absorbing panel system. It has principal uses as an acoustic liner within air inlet trunks and other sea water exposed (occasional splash wetting) areas. It is also used as an energy absorbing treatment to dampen sound and vibration on thin panels, and as a light weight thermal treatment that does not absorb condensation.

This product is made of expanded polypropylene pellets formed into rigid boards. The technology is based on recent developments related to energy absorbing plastics used for automobile crash protection. The material exhibits high chemical and moisture resistance derived from the special chemistry of the polypropylene resin. These chemistry modifications also enhance its unique sound absorption and damping properties.

The material is molded using a process of expanding polypropylene beads with hollow cavities. The expanded beads are non-porous, but the hollow cores and cracks

between adjacent beads allow sound into a labyrinth-like path where energy is absorbed. The hydrophobic nature of QuietPro allows sound absorption from a material that holds much less water than fiber based acoustic materials.

Sound absorption in 2" thickness achieves a value of  $NRC = 0.50$ . This value provides good sound absorption in moist applications, where fibrous or cellular foam materials cannot be used.

The structural stability of QuietPro combined with its sound and energy absorbing properties make it an ideal core material in marine interiors, machinery spaces, etc. A comparison of wall panels using 1.75" core with .625" skin showed that QuietPro increased the sound transmission coefficient by 9dB due to its excellent mechanical energy absorption characteristics.

Because of its excellent mechanical energy absorption characteristics QuietPro is an ideal light weight vibration damper.



8 ID (203.2mm) ENGINE EXHAUST PIPE

DUAL-LIFT (0.123m)

**SOUNDOWN CORPORATION**  
**ACOUSTIC INSULATION DETAIL**

SIZE: A PART NO.: 101010 DWG NO.: 1010  
 SCALE: NONE DATE: 02-09-01 DREW: [REDACTED]

http://www.soundown.com

THE INFORMATION HEREIN IS THE PROPERTY OF SOUNDOWN CORP. ANY COPYING TRANSMISSION TO OTHERS AND ANY USE EXCEPT THAT FOR WHICH IT IS EXPRESSED IS PROHIBITED WITHOUT THE WRITTEN PERMISSION OF SOUNDOWN CORP.

# ASTM ratings

QuietPro meets the following ASTM ratings:

ASTM E 84

Flame spread index (FSI) = 18

Smoke development (SD) = 124

Flammability: Class I or A Rating

# Physical Dimensions & Weight

0.5" (12.7mm) 2' x 4' (69cm x 122cm) .08lbs/sq/ft (.039kg/m<sup>2</sup>)

1.0" (25.4mm) 2' x 4' (69cm x 122cm) .16lbs/sq/ft (.078kg/m<sup>2</sup>)

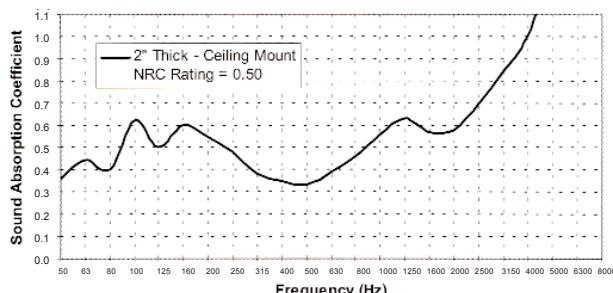
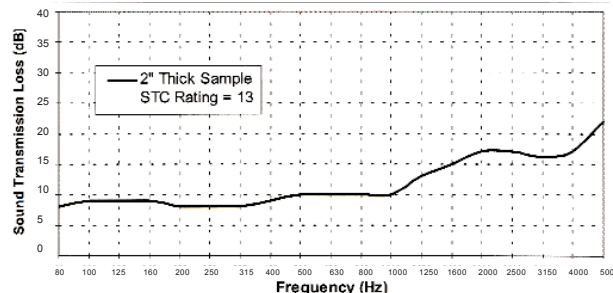
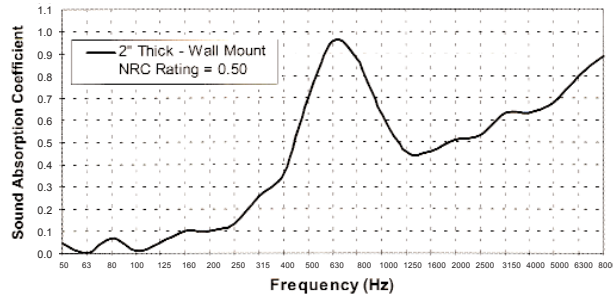
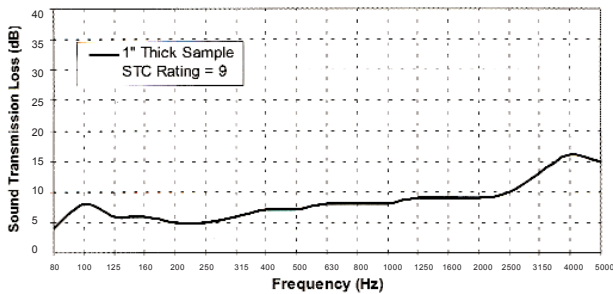
1.5" (38.1mm) 2' x 4' (69cm x 122cm) .24lbs/sq/ft (1.17kg/m<sup>2</sup>)

2.0" (50.8mm) 2' x 4' (69cm x 122cm) .32lbs/sq/ft (1.56kg/m<sup>2</sup>)

# Typical Physical Properties

Physical Property	Test Method	Units	Test Results			
Density	ASTM-D3575	pcf (g/l)	1.6 (25)	2.8 (45)	3.7 (60)	
Porosity	JSPI Internal	%	30	30	30	
Compressive Strength	ASTM-D3575	psi	@ 25% Strain	10.0	23.0	33.0
			@ 50% Strain	17.0	35.0	50.0
			@ 75% Strain	48.0	79.0	115.0
Compression Set	ASTM-D3575	%	8.0	9.0	9.0	
Tensile Strength	ASTM-D3575	psi	22.0	27.0	28.0	
Tensile Elongation	ASTM-D3575	%	15.0	13.0	12.0	
Tear Strength	ASTM-D3575	lbs/inch	TBD	TBD	TBD	
Thermal Conductivity	ASTM-C177 @ 75°F	(K) BTU-in/(ft <sup>2</sup> -hr-°F)	0.26	0.25	0.25	
Thermal Stability	ASTM-D3575	%	TBD	< 1.0%	TBD	
Linear Dimensional Change	24 hrs @ 225°F					
Thermal Resistance	ASTM-C177	(R)	3.8	4.0	4.0	
Coefficient of Linear Thermal Expansion	ASTM-D696	70° to -40°F	in/in/°F x 10-5	TBD	TBD	TBD
		70° to 180°F	in/in/°F x 10-5	TBD	10.8	TBD
Water Vapor Permeability	ASTM-E96	lbs/ft <sup>2</sup> /hr/mmHg	TBD	6.6 x 10-5	TBD	
Water Absorption	ASTM-C272	lbs/in <sup>3</sup> x 10-3	TBD	TBD	TBD	
Flammability	FMVSS-302	< 4.0 in/min.	Pass	Pass	Pass	
	ASTM-E84	Flame Spread Index	TBD	3 (1" thick), 5 (2" thick), 84 (1" thick)	TBD	
	ASTM-E84	Smoke Development Index	TBD	113 (2" thick)	TBD	
Chemical Resistance (Auto fuels, fluids, solvents)	Various	1 hr exposure	Pass	Pass	Pass	

# Typical Acoustic Properties



16 Broadway  
Salem, MA 01970  
1-800-359-1036  
www.SOUNDOWN.com



**SOUNDOWN**  
FOR PEACE AND QUIET

3005 S.W. 2<sup>nd</sup> Ave. #102  
Fort Lauderdale, FL 33315  
1-954-761-9188  
sales@soundown.com