

Technical Specifications

Reinforced TuffMass



Soundown's Reinforced TuffMass acoustic barrier combines the acoustical properties of TuffMass with a selection of durable and easily cleaned facings for use in a wide range of applications. Reinforced TuffMass is available in a number of surface densities and facings that can be finished with matching seam tape.

Often Soundown's Reinforced TuffMass is used as pipe lagging for the reduction of HVAC, water, sewage and material handling generated noises. The flexibility of this material allows for the wrapping of small to large diameter pipes and ducts where it greatly reduces the transmission of break through noise to living and/or work areas.

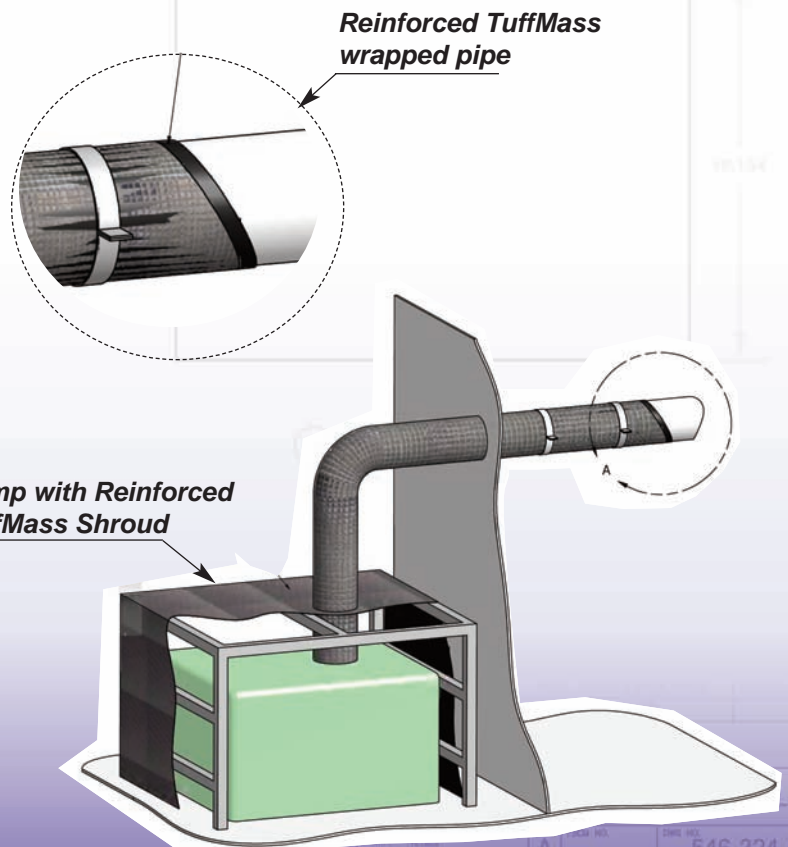
Reinforced TuffMass is also commonly used as a hanging partition around equipment in plants, offices and residential settings. By using purpose built frames or existing structures, Reinforced TuffMass can be hung in lengths up to 12' or even longer if intermediate supports are used. With STC ratings as high as 33 for the 2 lb/ft² density product using Soundown's Reinforced TuffMass as curtains can greatly reduce equipment generated noise and acoustically separate adjoining spaces.

Applications

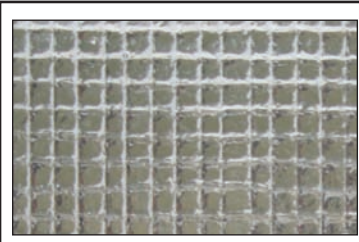
- HVAC Ducting
- Machinery
- Fan housing
- Removeable acoustic partitions

Advantages

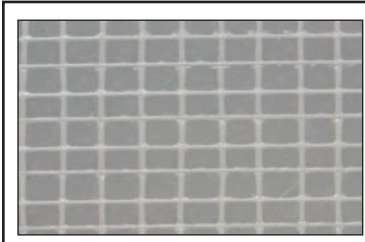
- Wide range of applications
- STC up to 33
- Reinforced for hanging applications
- Attractive durable finish



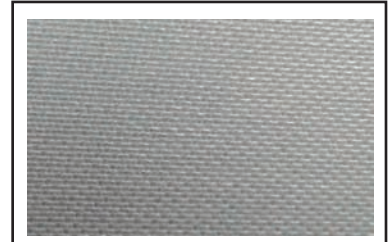
Facing Options



Aluminized Ripstop Facing



White Ripstop Facing



Coated Fiberglass Fabric

Typical Physical Properties

Property	Test method		0.5lb/ft2	1.0lb/ft2	1.5lb/ft2	2.0lb/ft2
Color			black	black	black	black
Thickness			0.0625"	0.125"	0.1875"	0.25"
Tensile Strength	ASTM D412	MD AMD	1350 kPa (196psi) min 1350 kPa (196psi) min	1350 kPa (196psi) min 1350 kPa (196psi) min	1350 kPa (196psi) min 1350 kPa (196psi) min	1350 kPa (196psi) min 1350 kPa (196psi) min
Ultimate Elongation	ASTM D412	MD AMD	45% / min 45% / min	45% / min 45% / min	45% / min 45% / min	45% / min 45% / min
Tear Strength	ASTM D624 Doe C	MD AMD	4500N/m (26psi) / min 4500N/m (26psi) / min	4500N/m (26psi) / min 4500N/m (26psi) / min	4500N/m (26psi) / min 4500N/m (26psi) / min	4500N/m (26psi) / min 4500N/m (26psi) / min
Stiffness	ASTM D747		16-65 Mpa	15-55 Mpa	not tested	not tested
Specific Gravity	ASTM D792		1.67 - 2.04	1.67 - 2.04	1.67 - 2.04	1.67 - 2.04
Cold Flex	SP - No.14		100% must pass	75% must pass	not	not tested
Shrinkage	SP -No.11		5% ave - 10% max	4% ave - 7% max	4% ave - 7% max	4% ave - 7% max
Fogging	SAE J1756		60 units min	60 units min	60 units min	60 units min
Odor	SAE J1351		3 rating max	3 rating max	3 rating max	3 rating max
Flammability	FMVSS 302		meets	meets	meets	meets
Flammability	ASTM E84			Flame - 5		Flame - 5
				Smoke - 65		Smoke - 110
				Class - A		Class - A

Acoustic Performance

Transmission Loss of Tuff-Mass

Frequency (Hz)	100	125	160	200	250	315	400	500	630	800	1k	1.25k	1.6k	2k	2.5k	3.15k	4k	5k	STC
0.5 lb/ft2	13	12	12	11	12	13	15	16	18	20	22	23	25	26	28	29	31	33	21
1 lb/ft2	18	17	16	16	17	18	20	22	24	26	27	29	30	32	34	35	36	38	26
1.5 lb/ft2	21	21	19	20	21	22	24	26	27	29	31	32	34	36	37	39	40	42	30
2.0 lb/ft2	25	23	22	22	24	25	27	28	30	32	34	35	37	38	40	41	43	45	33

All statements herein are expression of opinion that we believe to be accurate and reliable, but are presented without guaranty or responsibility on our part.

16 Broadway
Salem, MA 01970
1-978-745-7000
www.SOUNDOWN.com



3005 S.W. 2nd Ave. #102
Fort Lauderdale, FL 33315
1-954-761-9188
sales@soundown.com

2011.3.A